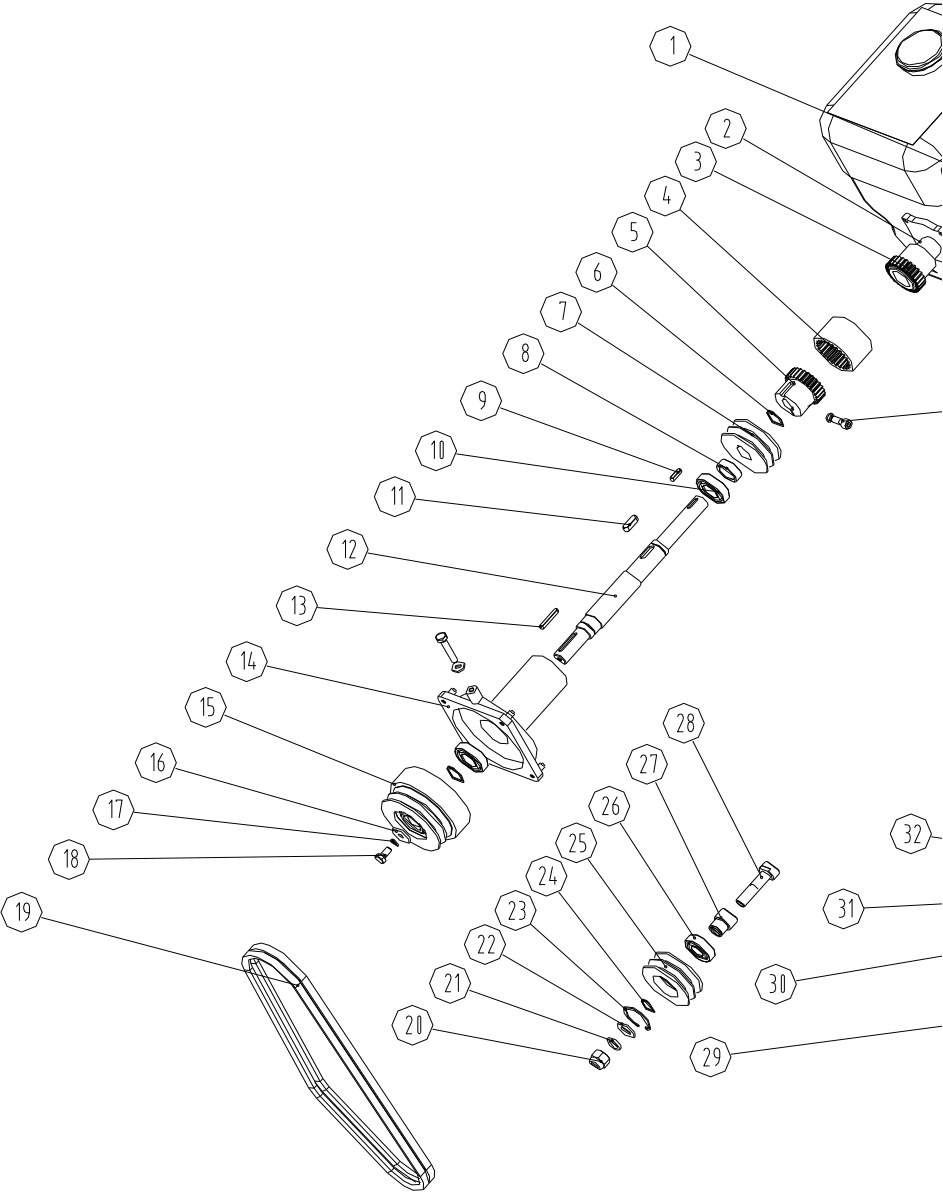


S p a r e p a r t s
m a n u a l

SAMSAN SDR260

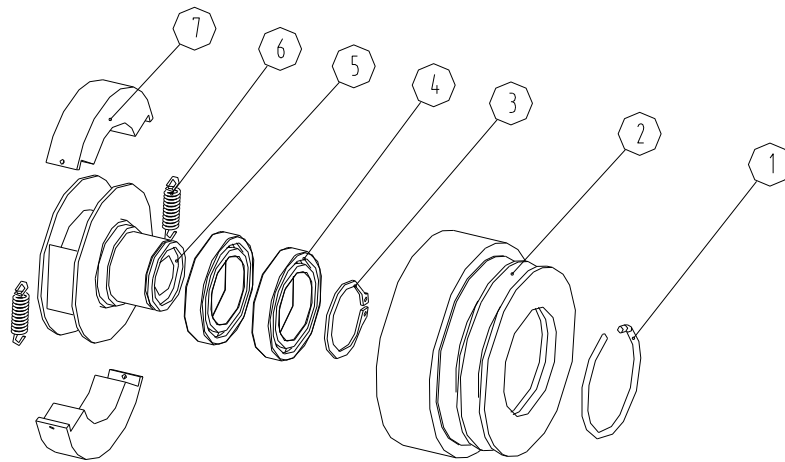
Vibration system



NO.	Item	Code	Model	quantity	remarks
1	Engine		GX160	1	
2	Engine bush	3600608A		1	
3	Engine coupling	3600605		1	
4	Nylon tie	0120522		1	
5	Coupling of vibration tube	3040507D		1	
6	Circlip for shaft		25		
7	Pulley	3600606A		1	
8	Sleeve	3600607B		1	
9	A flat key		A5X20	1	
10	Deep groove ball bearing		6005ZZ	2	
11	A flat key		A8X25	1	
12	Transmission shaft	3600601D		1	
13	A flat key		A5X35	1	
14	Axle sleeve	3600602B		1	
15	Clutch wheel assembly	3601201		1	
16	Flat washer		8.5X28.5	1	
17	Spring washer		8	2	
18	Hexagon bolt		M8X15	1	
19	Belt		XPZ987	2	
20	Lock nut		M14	1	
21	Spring washer		14	1	
22	Flat washer		14	1	
23	Circlip for hole		20	1	
24	Circlip for shaft		42	2	
25	Vibration tensioner pulley	3600708		1	
26	Deep groove bearing		6004ZZ	1	
27	Vibration tensioner pulley sleeve	3600709		1	
28	Vibration tensioner shaft	3600210		1	
29	C type flat key		C5X20	1	
30	Gear pump	3601017		1	
31	Circlip for shaft		30	1	
32	Pump support	3600206D		1	
33	Deep groove		6006ZZ	1	

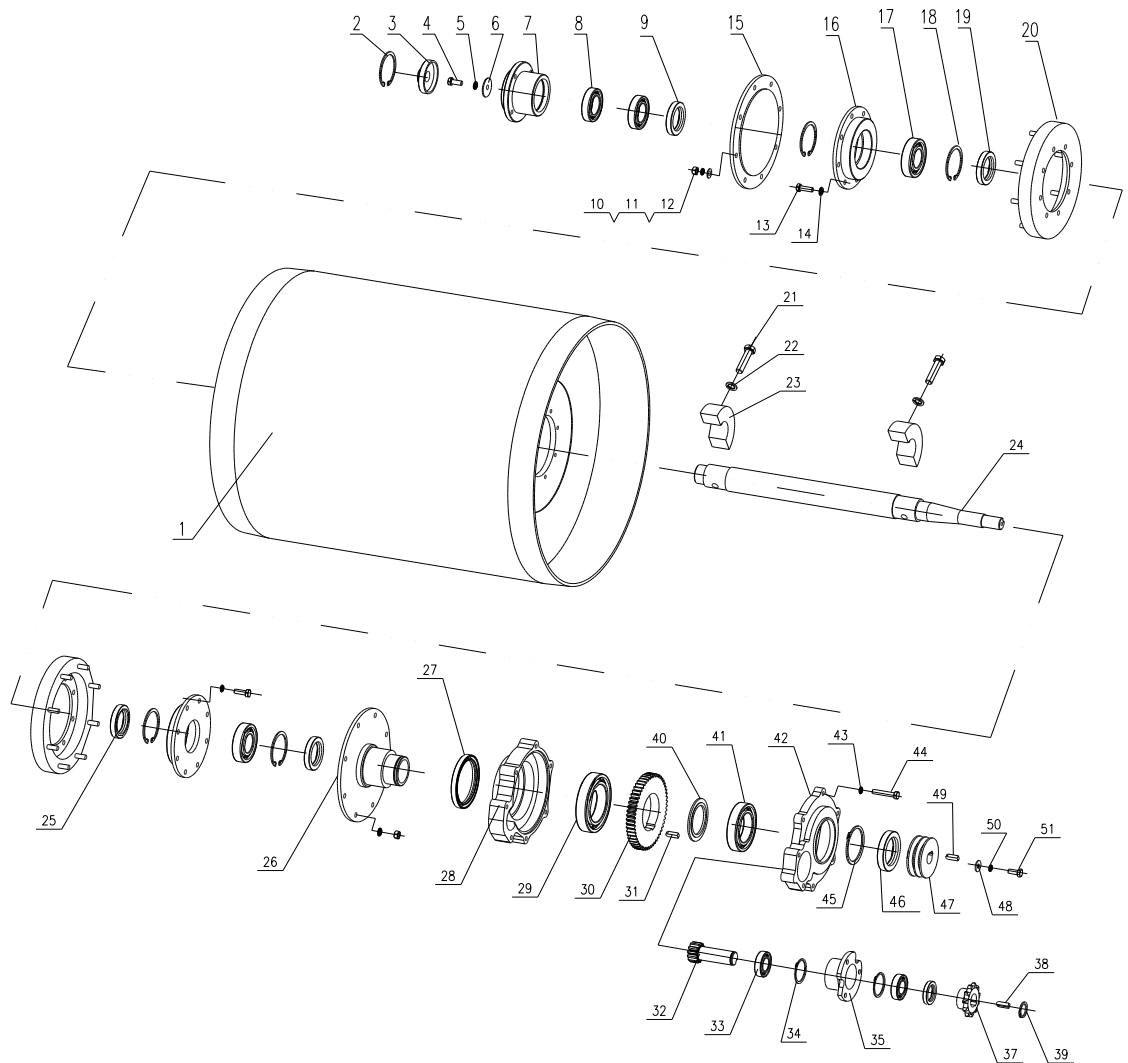
	bearing				
34	Circlip for hole		55	1	
35	Pulley	3600603B		1	
36	Circlip for hole		16	1	
37	Belt		SPZ612	2	
38	Hexagon screw		M8X20	1	

Clutch wheel assembly



NO.	Item	Code	Model	Quantity	Remarks
1	Round wire snap ring for hole	0040227		1	
2	Vibration clutch wheel	3600610A		1	
3	Circlip for shaft		35	1	
4	Deep groove bearing		6907ZZ	2	
5	Coupling	0260407A		1	
6	Draw spring	0260403		2	
7	Block	0260408		2	

Moving wheel assembly

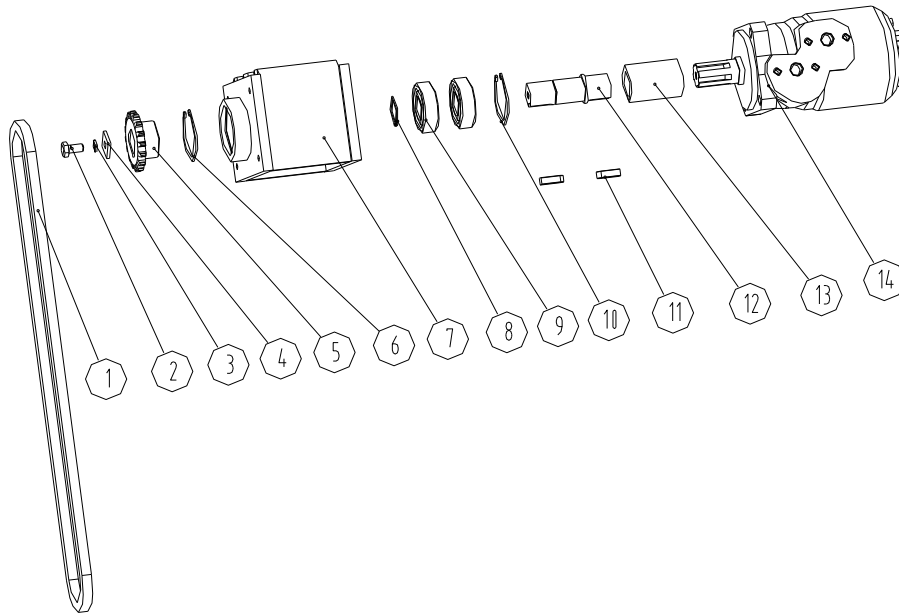


NO.	Code	Item	Quantity	Remarks
1	3600101	Roller assembly	1	
2		Circlip for hole62	1	
3	0260213	Cover	1	
4		Hexagon bolt M8×20	1	
5		Spring washer 8	1	

6		Extra-large flat washer 8	1	
7	0260215A	Bearing base	1	
8		Deep groove bearing 6007-2Z	2	
9		Lip-type seal ring $\Phi 45 \times \Phi 62 \times 8$	1	
10		Nut M8	16	
11		Spring washer 8	16	
12		Flat washer 8	16	
13		Hexagon bolt M8 \times 25	16	
14		Spring washer 8	16	
15	0260211	End cover	1	
16	0260102A	End of bearing	2	
17		Deep groove bearing 6207-2Z	2	
18		Circlip for hole 72	4	
19		Lip-type seal ring $\Phi 42 \times \Phi 72 \times 8$	2	
20	0260107	Shock absorber	2	
21		Hexagon bolt M12 \times 45-12.9	2	
22		Spring washer 12	2	
23	3600103	Fling block	2	
24	3600102	Main shaft	1	
25		Lip-type seal ring $\Phi 42 \times \Phi 72 \times 8$	1	
26	0260210	End cover	1	
27		Lip-type seal ring $\Phi 80 \times \Phi 100 \times 10$	1	
28	0260201A	Gear box	1	
29		Deep groove bearing 6014-2Z	1	
30	0260203	Gear	1	
31		Flat key 12 \times 8 \times 17	1	
32	0260204B	Input gear	1	
33		NJ205	2	

34		Circlip for hole 47	2	
35	0260205E	Bearing base	1	
36		Circlip for hole $\Phi 38 \times \Phi 50 \times 7$	1	
37	0260209C	Chain wheel	1	
38		Flat key $8 \times 7 \times 25$	1	
39		Circlip for shaft 25	1	
40	0260206	Circle pad	1	
41		Deep groove bearing 6011-2Z	1	
42	0260202A	Gear box cover	1	
43		Spring washer 8	7	
44		Hexagon bolt $M8 \times 45$	7	
45		Circlip for shaft55	1	
46		Lip-type seal ring $\Phi 55 \times \Phi 75 \times 8$	1	
47	0260805	Vibration pulley	1	
48		Extra-large flat washer 8		
49		Flat key 8×35	1	
50		Spring washer 8		
51		Hexagon bolt $M8 \times 16$	1	

Driving assembly



NO.	Item	Code	Model	Quantity	Remarks
1	Chain	3600711	1A-72L	1	
2	Hexagon bolt		M8X15	1	
3	Spring washer		8	1	
4	Extra-large flat washer		8.5X28.5	1	
5	Transmission chain	3040603A		1	
6	Circlip for hole		47	1	
7	Motor mounting seat	3600401		1	
8	Circlip for shaft		25	1	
9	Deep groove bearing		6005ZZ	2	
10	Circlip for hole		47	1	
11	C type falt key		C8X24	1	
12	Transmission shaft	3600403		1	
13	Connecting sleeve	3600402		1	
14	Cycloid motor	3601003		1	